

# 08.

# AUGUST

# 2023



SUNDAY	MONDAY	TUESDAY	WEDNESDAY	THURSDAY	FRIDAY	SATURDAY
30	31	01	02	03	04	05
06	07	08	09	10	11	12
13	14	15	16	17	18	19
20	21	22	23	24	25	26
27	28	29	30 <b>Set-Up Day for Teachers &amp; Assistants</b>  CLOSED	31 <b>Set-Up Day for Teachers &amp; Assistants</b>  CLOSED	01	02

# 09.

# SEPTEMBER

# 2023



SUNDAY	MONDAY	TUESDAY	WEDNESDAY	THURSDAY	FRIDAY	SATURDAY
					01 <b>Professional Development Day for Teachers &amp; Assistants</b>	02
					CLOSED	
03	04 <b>Labor Day</b>  CLOSED	05 <b>New Student Orientation Day (Last Names A-L 10:00-10:30, M-Z 10:30-11:00)</b> <b>Set-Up Day for Teachers &amp; Assistants</b> CLOSED except for visitation	06  <b>First Day of School</b>	07	08	09
10	11	12	13	14	15	16
						Rosh Hashanah
17	18	19	20	21 <b>Parent Back to School Night 6:30-7:30PM (ADULTS ONLY)</b>  Peace Day	22	23
24	25	26	27	28	29	30

# 10.

# OCTOBER

# 2023



SUNDAY	MONDAY	TUESDAY	WEDNESDAY	THURSDAY	FRIDAY	SATURDAY
01	02 <b>Cherrydale Fundraiser Begins</b>  <b>School Picture Day – Carriage Studios at MCH</b>	03 <b>First Spanish Class</b>	04	05 <b>First Music Class</b>	06 <b>Staff In-Service Day</b>  CLOSED	07
08	09  Columbus Day Indigeneous Peoples Day	10	11 <b>Fire Truck Visit</b>	12 <b>Music</b>	13 <b>Kindergarten Conferences (School Open, by Appointment only)</b>	14
15	16 <b>Cherrydale Fundraiser Ends</b> <b>First Gym Class</b>	17	18	19 <b>Music</b>	20  <b>Trunk or Treat at MCH 6:30-7:30</b>	21
22	23	24 <b>Spanish</b>	25	26 <b>Music</b>	27 <b>First Library Class</b>	28
29	30 <b>Gym</b>	31  Halloween	01	02	03	04

# 11.

# NOVEMBER

# 2023



SUNDAY	MONDAY	TUESDAY	WEDNESDAY	THURSDAY	FRIDAY	SATURDAY
29	30	31	01	02 Music	03 Library	04
05  Daylight Savings Time Ends	06  Parent Classroom Observations  Gym	07  Parent Classroom Observations  Diwali Celebration (Volunteers Needed)  Election Day	08  Parent Classroom Observations  Library	09  Parent Classroom Observations  Music	10  Parent/Teacher Conferences  CLOSED supplemental care open 8-5 Veterans Day	11
12	13	14  Spanish	15  Health Department "Germ Talk"	16  Music	17  Parent/Teacher Conferences  CLOSED supplemental care open 8-5	18
19	20  Gym	21	22  Library	23	24  Happy Thanksgiving  CLOSED	25
26	27	28  Spanish	29	30  CLOSED	01  CLOSED	02

# 12.

# DECEMBER

# 2023



SUNDAY	MONDAY	TUESDAY	WEDNESDAY	THURSDAY	FRIDAY	SATURDAY
26	27	28	29	30	01	02
03	04 <b>Gym</b>	05	06  <b>Safari Party Animal Show</b>	07 <b>Music</b>	08 <b>Library</b>  Chanukah Begins	09
10	11	12 <b>Spanish</b>	13	14 <b>Music</b>	15 <b>Library</b>  Chanukah Ends	16
17	18 <b>Gym</b>	19	20 <b>Library</b>	21 <b>Music</b>	22 <b>Holiday Celebrations Families Invited!</b>  CLOSING AT 12:00	23
24  Christmas Eve	25  <b>CLOSED</b>	26  <b>Winter Vacation</b> <b>CLOSED</b> supplemental care open 8-5	27  <b>Winter Vacation</b> <b>CLOSED</b> supplemental care open 8-5	28  <b>Winter Vacation</b> <b>CLOSED</b> supplemental care open 8-5	29  <b>Winter Vacation</b> <b>CLOSED</b> supplemental care open 8-5	30
31	01	02	03	04	05	06

# 01.

# JANUARY

# 2024

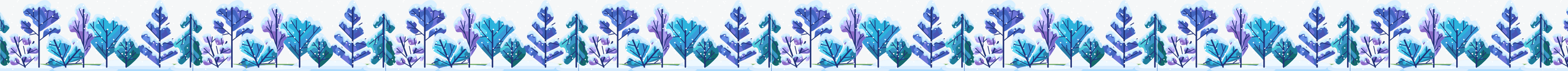




SUNDAY	MONDAY	TUESDAY	WEDNESDAY	THURSDAY	FRIDAY	SATURDAY
	01  CLOSED	02 SCHOOL RESUMES	03 Gym	04 Music	05 Library	06
07	08 Bucks County Vision Screening	09 Spanish	10 Library	11 Music	12 Staff In-Service	13
14	15  DAY CLOSED	16	17	18 Music	19 Library	20
21	22	23 Spanish	24 Kindergarten Information Session for Parents 4:00PM	25 Music	26 Library	27
28	29 Gym	30	31			

# 02.

# FEBRUARY

# 2024



SUNDAY	MONDAY	TUESDAY	WEDNESDAY	THURSDAY	FRIDAY	SATURDAY
				01 Music	02 Library	03
					Groundhog Day	
04	05 Gym	06	07 Health Department presents: Poison Control Program	08 Music	09 Lunar New Year Festivities: Parent Volunteers Needed 	10 Lunar New Year
11	12	13 Spanish	14 Valentine's Day Festivities  Valentine's Day	15 Music	16 Library	17
18	19 <b>HAPPY</b> <b>PRESIDENT'S</b> <b>DAY</b> *** CLOSED	20	21	22 Music	23 Library	24
25	26 Gym	27 Spanish Goodies for Grown-ups	28 Library	29 Music		
<b>Scholastic Book Fair</b> <b>MONTESSORI EDUCATION WEEK!</b>						

# 03.

# MARCH

# 2024



SUNDAY	MONDAY	TUESDAY	WEDNESDAY	THURSDAY	FRIDAY	SATURDAY
					01 <b>Pajama Day with Family</b> <b>Stages Theater presenting:</b> <i>Peter Pan!</i> <b>LAST DAY OF MONTESSORI</b> <b>EDUCATION WEEK!</b>	02
03	04 <b>Gym</b>	05	06	07 <b>Music</b>	08 <b>Library</b>	09
10 <small>Daylight Savings Time Starts</small>	11 <b>Gym</b> <small>Ramadan Starts</small>	12 <b>Spanish</b>	13 <b>Library</b>	14 <b>Music</b>	15 <b>Staff In-Service Day</b> <small>CLOSED</small>	16
17 <small>St. Patrick's Day</small>	18	19	20	21 <b>Music</b>	22 <b>Library</b>	23
24	25 <b>Spring Vacation</b>  <small>CLOSED</small> <small>supplemental care open</small>	26 <b>Spring Vacation</b>  <small>CLOSED</small> <small>supplemental care open</small>	27 <b>Spring Vacation</b>  <small>CLOSED</small> <small>supplemental care open</small>	28 <b>Spring Vacation</b>  <small>CLOSED</small> <small>supplemental care open</small>	29 <b>Good Friday Holiday</b> <small>CLOSED</small>	30
31						



# 04.

# APRIL

# 2024




SUNDAY	MONDAY	TUESDAY	WEDNESDAY	THURSDAY	FRIDAY	SATURDAY
	01 Gym Flower Bulb Sale Begins Chick Hatching Project Begins	02	03	04 Music	05 Library	06
07	08 Lunar Eclipse	09 Spanish	10 Eid al-Fitr	11 Music "Move Up" Info Night for Parents of children moving from Prep to Primary 4PM	12 Library Chicks Return Back to Farm	13
14	15 Gym	16	17	18 Music	19 Library Flower Bulb Sale Ends	20
21	22 Parent Classroom Observations  Passover (Sunday)	23 Spanish Parent Classroom Observations	24 Library Parent Classroom Observations	25 Music Parent Classroom Observations	26 Parent/Teacher Conferences  CLOSED supplemental care open 8-5	27
28	29	30 Last Day of Passover				

# 05.

# MAY

# 2024



SUNDAY	MONDAY	TUESDAY	WEDNESDAY	THURSDAY	FRIDAY	SATURDAY
			01	02	03 Parent/Teacher Conferences  CLOSED supplemental care open 8-5	04
05  Cinco de Mayo	06	07	08	09	10	11
12  Mother's Day	13	14	15	16	17	18  International Family Fest Fundraiser
19	20	21	22	23	24	25
26	27 <b>MEMORIAL DAY</b> ★★★ Remember and Honor  CLOSED	28	29	30	31 School Picnic 12:00-1:00 Kindergarten Recognition 1:30-2:30	

# 06.

# JUNE

# 2024



SUNDAY	MONDAY	TUESDAY	WEDNESDAY	THURSDAY	FRIDAY	SATURDAY
						01
02	03	04	05	06 <i>Summer</i> Last day of School	07 <b>Pack-Up Day for Teachers &amp; Assistants</b>  CLOSED	08
09	10	11	12	13	14	15
16  Father's Day	17	18	19  Juneteenth	20	21  National Indigenous Peoples Day	22
23	24	25	26	27	28	29
30						